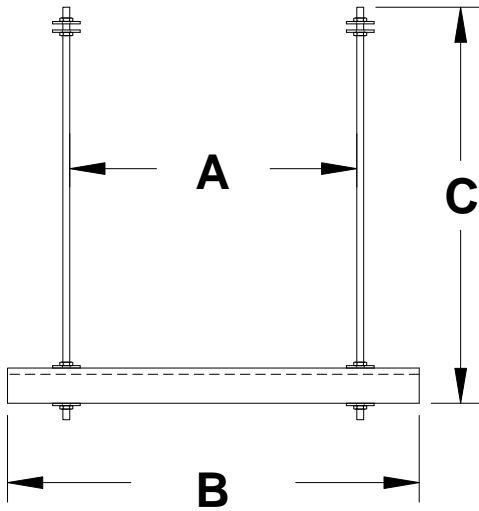
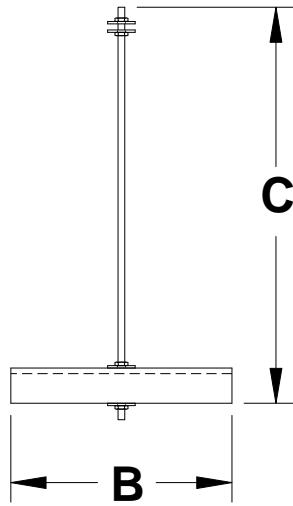


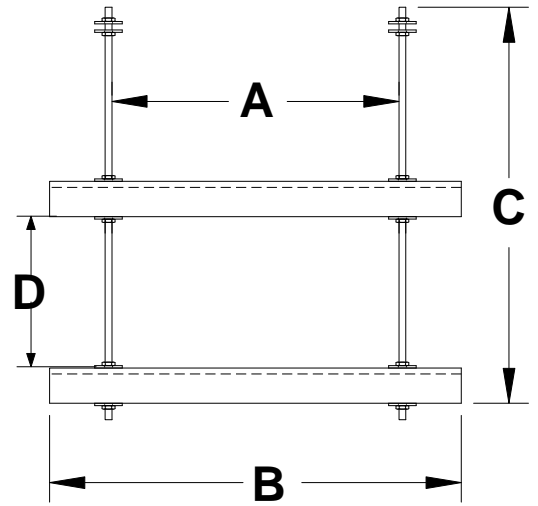
TRAPEZE ASSEMBLY ORDER FORM



QTY: _____



QTY: _____



QTY: _____

SELECT OPTIONS AS REQUIRED

UNISTRUT OPTIONS

- SHALLOW = 7/8 X 14 GAUGE
- DEEP = 1 5/8 X 12 GAUGE
- BACK TO BACK = 3 1/4 X 12 GAUGE
- BACK TO BACK = 1 3/4 X 14 GAUGE

FINISH OPTIONS

- ZINC
- GALVINIZED
- STAINLESS

TOP OPTIONS

- ROD COUPLER
- NUTS / WASHERS
- BEAM CLAMP
- LAG SCREW (SAMMY)

ROD OPTIONS

- 1/4"
- 3/8"
- 1/2"
- LENGTH

SPECIAL

UNLESS OTHERWISE NOTED - STRUT OPENING FACES UPWARD

TOTAL ORDERED: _____

DATE ORDERED:

ORDERED BY:

DATE NEEDED AT JOBSITE:

CONTACT:

#:

LOCATION AT JOBSITE:

SPECIAL INSTRUCTIONS:

JOB NAME:

JOB #:



ISSUE DATE:

JOB PHASE:

COST CODE: