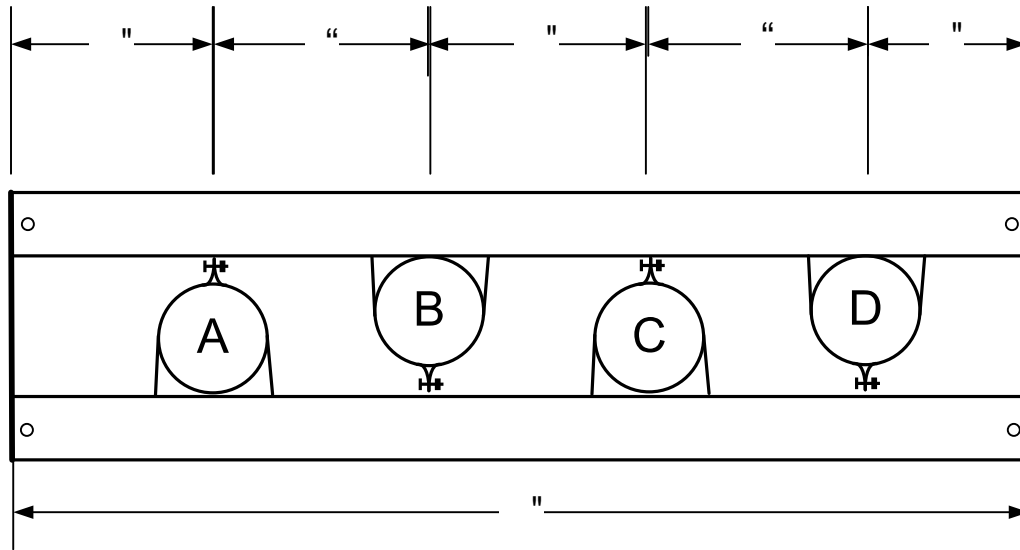


FLOOR SLEEVE ASSEMBLY ORDER FORM

OPTIONS	
SLEEVE MATERIAL - EMT , GRC, PVC	
SLEEVE LENGTH	
SLEEVE 'A' SIZE	
SLEEVE 'B' SIZE	
SLEEVE 'C' SIZE	
SLEEVE 'D' SIZE	
UNISTRUT DEPTH (1-5/8", 7/8")	



UNLESS OTHERWISE REQUESTED ASSEMBLY ORDERS INCLUDE:

- ARLINGTON PUSH-ON BUSHINGS
- UNISTRUT WILL BE CENTERED

TOTAL ORDERED:

DATE ORDERED:

ORDERED BY:

DATE NEEDED AT JOBSITE:

CONTACT:

#:

LOCATION AT JOBSITE:

SPECIAL INSTRUCTIONS:

JOB NAME:

JOB #:



ISSUE DATE:

JOB PHASE:

COST CODE:

--